



**pasadena  
conservatory  
of music**

Annual Report 2012–2013







3 DIRECTOR'S LETTER

4 BOARD CHAIR'S LETTER

5 BOARD OF DIRECTORS



6 PCM HISTORY



9 STUDENT NEWS



10 GRADUATES OF 2013

12 PCM AT A GLANCE

14 OUTREACH



16 YEAR IN REVIEW



18 DONORS

21 FUTURE PCM

23 FACULTY AND STAFF





**Left:** Student Jose Moreno, photo by Dario Griffin  
**Above:** Student Patrick Murphy, guest performer  
Melanie Emello, photos by Dario Griffin; teacher  
Rebecca Merblum, photo by Gary Leonard

## Message from the Executive Director



Dear Friends of PCM,

New Year's Eve marks PCM's thirtieth birthday. Much has happened over the past three decades and, with a major construction project in the works, it's clear that the next chapter will be exciting and one of continued growth. Reflecting recently on our rich history, I have been reminded of a number of special individuals whose contributions along the way were fundamental to the Conservatory's success. This past year, two of these protagonists passed away, but their dedication and hard work will continue to be reflected in daily life at our school for years to come.

Wynne Stone cofounded the Pasadena Conservatory of Music with friend Silke Sauppé in 1984. Their vision and commitment to attracting exceptional instructors gave the school a remarkable start. The school thrived during those early years and grew rapidly.

A decade later, Pasadena-born fundraising consultant Barbara Martin joined the Conservatory as its first director of development. It was her idea to start the Mansions & Music concerts. This series turned out to be especially effective in introducing the Conservatory to a growing number of supporters and still continues.

This report provides a snapshot of where we are today and allows us to acknowledge the extraordinary and generous contributions that make our school's work possible.

Sincerely,

*Stephen McCurry*

Stephen McCurry

EXECUTIVE DIRECTOR





Noteworthy events in music for the year 1983: compact discs debut in the U.S., Michael Jackson unveils the moonwalk on the Motown special, and a music school opens its doors in Pasadena, California, at the intersection of Queensberry Road and Allen Avenue.

For many people, turning 30 is a bit traumatic. Many see it as the end of youth, the beginning of middle age and the onset of the serious life. Robert Frost memorably said “Time and tide wait for no man, but time always stands still for a woman of thirty.”

Not so for the Pasadena Conservatory of Music. I say with conviction that we mark this anniversary not with bittersweet nostalgia, nor with trepidation of what’s to come, but with considerable pride in our past and with confidence in the direction we head.

What began as a dream, with forty students taking lessons in a church basement, is now a prospering institution that serves more than 1,200 on campus, and provides significant educational outreach programs in the community at large. More than 60 faculty members span nine musical disciplines, including our newest department, Jazz Studies.

Over the past year, progress continued, with enrollment up 12 percent. Financially, we report that our sterling fiscal record remains unblemished. The \$7.5 million Milestones campaign made significant strides, as we now cross the \$7 million threshold with the momentum to see our way to the finish.

Soon, the dreams of today will begin to take shape, as we create an exceptional performing space to showcase the work of our outstanding faculty and their students, while preparing our wonderful, if a bit old, original Hill Avenue campus for the thirty years to come.

So, Mr. Frost, time will not stand still at PCM. Thirty exceptional years have passed, and they will remain a part of us as we move enthusiastically forward. Excelsior indeed.

Sincerely,

Henry O. Eversole  
CHAIRMAN OF THE BOARD



Photo by Gary Leonard

BOARD OF DIRECTORS  
2012–2013

Henry O. Eversole, *Chairman*  
Stephen A. Kanter, M.D., *Treasurer*  
Karen Stracka, *Secretary*

Olin Barrett  
Brian P. Brooks  
Juan Ceva  
V. Shannon Clyne  
Linda S. Dickason  
Jane Kaczmarek  
Peter Knell  
Alison Lifland  
Roger Mullendore  
Laurie Sowd

ADVISORY BOARD  
2012–2013

Sara Campbell Abdo  
Roman Andrew Borek  
Stuart Bowne  
Elisa Greben Callow  
Julie Campoy  
Norma Cowles  
Fritzie Culick  
Barbara Dahn  
Louis Gutierrez  
Jennifer Johnson  
Yonnie and Raymond Kim  
Frances Kimbrough  
Thomas D. Leddy  
Barbara Martin  
Priscilla Moorman  
Janelle Hardin Morton

Stephen Nowlin  
Mary Crotty O'Reilly  
Elena Phleger  
Betty Sandford  
Hope Tschopik Schneider  
Dorothy McCay Scully  
Ann F. Sunshine  
Ian White-Thomson



# PCM History

## Beginnings

December 31, 2013, marks the thirtieth anniversary of the Conservatory's incorporation and launching of the dream of its cofounders, Wynne Stone and Silke Sauppé, to create a center of music education and performance for the Pasadena community.

Wynne and Silke had been teaching Suzuki piano at the Claremont Community School of Music (and were tired of the long commute), when Wynne decided to start a music school in Pasadena and Silke took up the challenge and joined in. With their husbands, Norman Sauppé and "Rocky" Stone, they planned their new school around the Sauppés' dining room table, an enterprise that would take vision, energy, and shoe-leather. Over the next year, they found the school's first home at Mount Olive Lutheran Church on Queensberry Road and Allen Avenue, where Silke was the organist, and where Rocky canvassed the neighbors on whether they would mind having a music school nearby. They hired a secretary and a registrar and distributed advertising flyers, printed on Norman's home computer, to schools, libraries, and music stores. In the summer, Wynne traveled around the country, studying other community music schools, particularly how they operated and how they got their funding.

On January 3, 1984, the Pasadena Conservatory of Music opened its doors to forty students. The faculty of nine joining Wynne and Silke included Ruth Kasckow, Cynthia Fogg, Fritzie Culick, Rick Mooney, Barbara Jensen, Michael Huang, and Charlotte Zelka. Charlotte added a fine grand piano to Mount Olive's collection of church "klunker" pianos and also contributed her connections in the music world far beyond Pasadena: the Schnabel Piano Duo visited annually to perform and conduct master classes, Ernst Krenek celebrated his eighty-fifth birthday at PCM, and Nicolas Slonimsky entertained his young audience by playing the piano backwards while lying on the floor. By the end of its first year, the Conservatory was teaching 150 students and had tripled the size of its faculty. The school continued to thrive during those early years, which were characterized by exuberance, fun, and freedom to innovate. When, in 1991, the time had come to find a new home, Wynne and Silke relocated the school to 845 Atchison Street (behind Westminster Presbyterian Church). Here the Conservatory continued on the path of growth they had so capably started.



View of PCM's campus from accross Hill Avenue, renovated



PCM's current south wing



PCM's former campus: two white bungalows at 845 Atchison Street





# Our Students

Every year, PCM students are locally and nationally recognized for their musician-ship, hard work, and talent. Here are a few of the many impressive student achieve-ments from the past year.

## PIANO DEPARTMENT

Four students won awards at the Southwestern Youth Music Festival.

**Ryan Dewberry** placed second in the Chopin Mazurka category as well as the solo category, **Zoey** and **Ella Mao** placed second in the piano duet category, **Juliet Pooler** placed third in the Chopin category, and **Spencer Rooke** placed third in the American composer category.

**Erica Lee, Juliet Pooler, Katelyn Vahala,** and **Leila Wu** made it to the final round of the Southern California Junior Bach Festival.

**David Rodgers** won the Pasadena Rotary Club's Dan Stover Memorial Instrumental Music Competition and received a full scholarship plus stipend to Vanderbilt University School of Music.

**Katelyn Vahala** won second place in the Bach Festival Complete Works Auditions 2012, third place in the Los Angeles Young Musicians International Competition 2013, her piano trio won first place in the American Protégé Competition 2013 and second place in the USC/Junior Chamber Music Chamber Competition 2013, and she won a gold medal in the 2013 Bach Complete Works Auditions for her performace of the Fantasie and Fugue in A Minor, BWV 904.

## WINDS AND BRASS DEPARTMENT

**Bryan Rose** placed third in the Sierra Madre Rotary Club's Dan Stover Memorial Instrumental Music Competition.

**Jeff Haeglin, Jonathan Martinez,** and **Chris Myers** were all accepted to the Pasadena Youth Symphony Orchestra/ Wind Ensemble, and **Chris Myers** won the principal clarinet assignment.

## CHAMBER MUSIC DEPARTMENT

Chamber groups **Cantando Quartet** and **Judadii Trio** made it to the semifinals of the national Fischhoff Competition, which places them among the top twelve chamber groups in the country.

## STRINGS DEPARTMENT

**Cameron Cheung** won the principal second violin position in Pasadena Youth Symphony Orchestra (PYSO).

**Natalie Dale** won a position in the first violin section of PYSO.

**Jeff Huang** won the concertmaster position in Pasadena Young Musicians Orchestra (PYMO) and placed first in the Dan Stover Memorial Instrumental Music Competition for high school seniors sponsored by the Arcadia Rotary Club at the club level.

**Anya Kwan** won second place in the San Marino Dan Stover Memorial Instrumental Music Competition.

**Marian Sato** won second place in the San Dimas Rotary Club's Dan Stover Memorial Instrumental Music Competition.

**Calvin Lin** won the principal second posi-tion in PYMO.

**Atticus Mellor-Goldman** won first place in the MTAC memorial awards competition and also won a position in the cello section of the America Youth Symphony.

## GUITAR DEPARTMENT

**Djembe Aschmann, Maggie Grether, Blake Hardy, Michelle Laloie, Mackenzie Mendez, Michelle Nguyen, Neel Sadda, Adriana Shen, Kendrick Shen, Ethan Wang, Malachi Wang,** and **Brandon Wong** all performed and won awards at the Pacific Guitar Festival in Monrovia.

The aforementioned musicians studied with the following teachers:

### Stephen Cook, piano

Ryan Dewberry, Ella Mao, Zoey Mao, Juliet Pooler, and Spencer Rooke

### Susan Svrček, piano

Erica Lee, David Rodgers, Katelyn Vahala, and Leila Wu

### Heather Millette, clarinet

Thomas Brooks, Jonathan Martinez, and Chris Myers

### Toby Holmes, low brass

Jeff Haeglin and Bryan Rose

### Andrew Cook, cello and chamber music

Cantando, Judadii, and Atticus Mellor-Goldman

### Sharon Harman, violin

Cameron Cheung, Natalie Dale, Jeff Huang, and Calvin Lin

### Cynthia Fogg, violin

Anya Kwan and Marian Sato

### Felix Bullock, guitar

Djembe Aschmann, Maggie Grether, Blake Hardy, Michelle Nguyen, Neel Sadda, Adriana Shen, Kendrick Shen, Ethan Wang, Malachi Wang, and Brandon Wong

### Connie Sheu, guitar

Michelle LaJoie and Mackenzie Mendez



We asked PCM's high school seniors to reflect on their time at PCM before they left for college. Here are some highlights from their thoughtful responses. Some of them studied at the Conservatory for more than a decade and all of them have a great history with the school, which we hope will continue into their adult lives.

## WHY IS MUSIC EDUCATION IMPORTANT TO YOU?

As someone who has been lucky enough to be the recipient of 14 years of music education, I believe that the values music education instills in a student are priceless. Music teaches you how to be disciplined, how to figure out solutions for problems you may encounter, and offers you the exciting opportunity to simply make music.

**David Rodgers** (piano), Vanderbilt University, piano performance/computer science double major

I feel like music education is important in order to educate a whole and cultured person.

**Daniele Bellutta** (piano), Ohio State University, computer science major

I think it is good to be well-rounded and culturally exposed in a variety of areas.

**Sonia Aparicio** (violin), Columbia University, art history major

It is a way for me to relax and escape from reality and stress. It is very soothing and always can free up my mind. It is also a great way to get involved with something other than school and sports. It is a different outlet that I think everyone should have.

**Alex Ford** (violin), Princeton University

Music education evokes a kind of learning unfound in standard education. Emotional expression, critical thinking, and consistency are all skills I've obtained from studying music.

**Jeff Huang** (violin), University of California Irvine, business and violin performance double major

To put it simply, music education has made me really happy throughout my life. I'd played the piano since I was six and the violin since I was nine, but learning voice with Ms. Mariné was really different and fascinating.... Music education has taught me how to handle life and also how to share it with others.

**Emily Lam** (voice), University of Southern California, accounting major

It gives performers and listeners insight to the past and what others enjoyed. Music can really define a person and I think that's cool. People can easily express themselves.

**Joshua Witzczak** (guitar), Biola University, business major

Music education has helped me grow as a person and become more intelligent. I feel like music education helps children become wiser and more mature and disciplined.

**Mimi Ruth Stiver** (voice), Whittier College, theater arts major

Because it's a great advantage to have, and it is also fun.

**Zayn Thompson** (piano), St. Lawrence University, biology/pre-med major

## WHAT IS YOUR FAVORITE MEMORY FROM YOUR TIME AT PCM?

My favorite memory is singing "Habenera" on stage in a studio recital and then "dying" onstage after playing.

**Anya Kwan** (violin), Harvey Mudd College, biology-chemistry joint major and concentration in music

My favorite memory at PCM would have to be the times when I could really connect, feel, and enjoy the music during a live performance, which would always make me very nervous. Another favorite memory would have to be when I premiered Mr. Enrique Gonzalez's "Capriccio" and he said that it sounded like what he had imagined it to sound like.

**Raina Choi** (piano), University of Southern California

I can't think of any specific event that's stood out to me, but the overall sense of a community I've felt has been fantastic. I've been so blessed to have developed relationships with many of the PCM faculty and students, and I can't thank PCM enough for the opportunities that have been provided for me. Thinking of it now, perhaps my favorite memory was representing PCM at the 2012 Gold Crown Awards, after PCM nominated me for Pasadena Arts Council's Young Artist Award in music.

**David Rodgers** (piano), Vanderbilt University, piano performance/computer science double major

Every lesson with Mr. Holmes is a gift; he makes lessons fun and helpful.

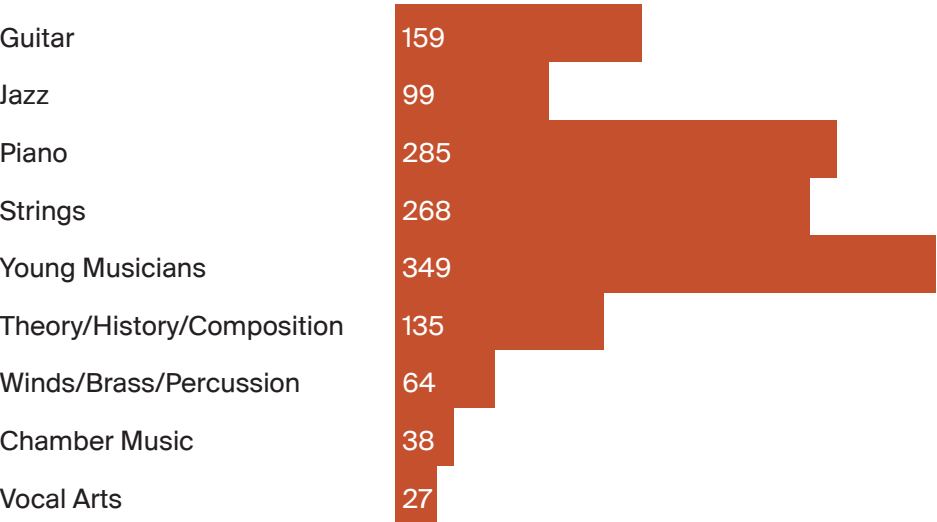
**Bryan Rose** (trombone), Rose-Hulman Institute of Technology, mechanical engineering major

Above: Anya Kwan, Bryan Rose, Emily Lam, and David Rodgers (back row); Sonia Aparicio, Raina Choi, and Mimi Ruth Stiver (front row)

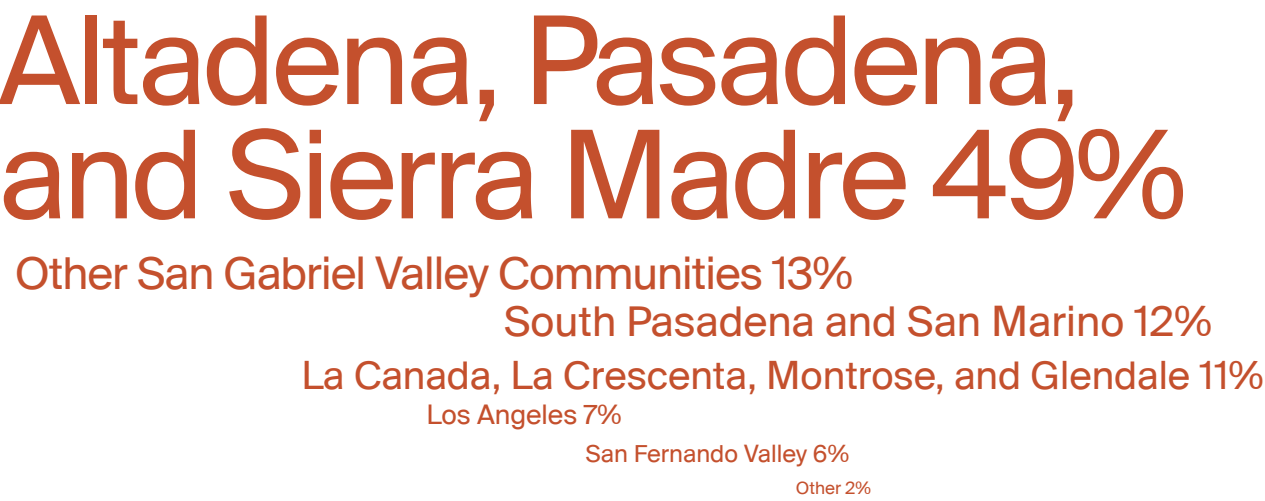


# PCM at a Glance

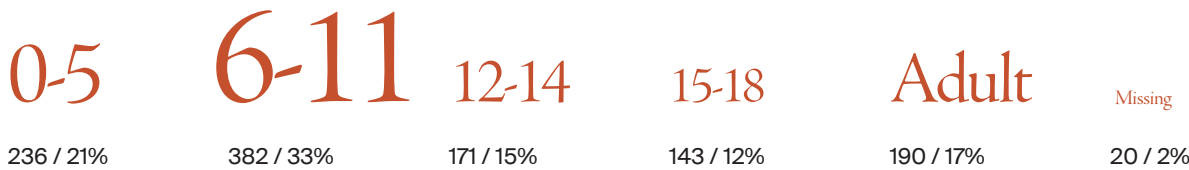
DEPARTMENTS: ENROLLMENT



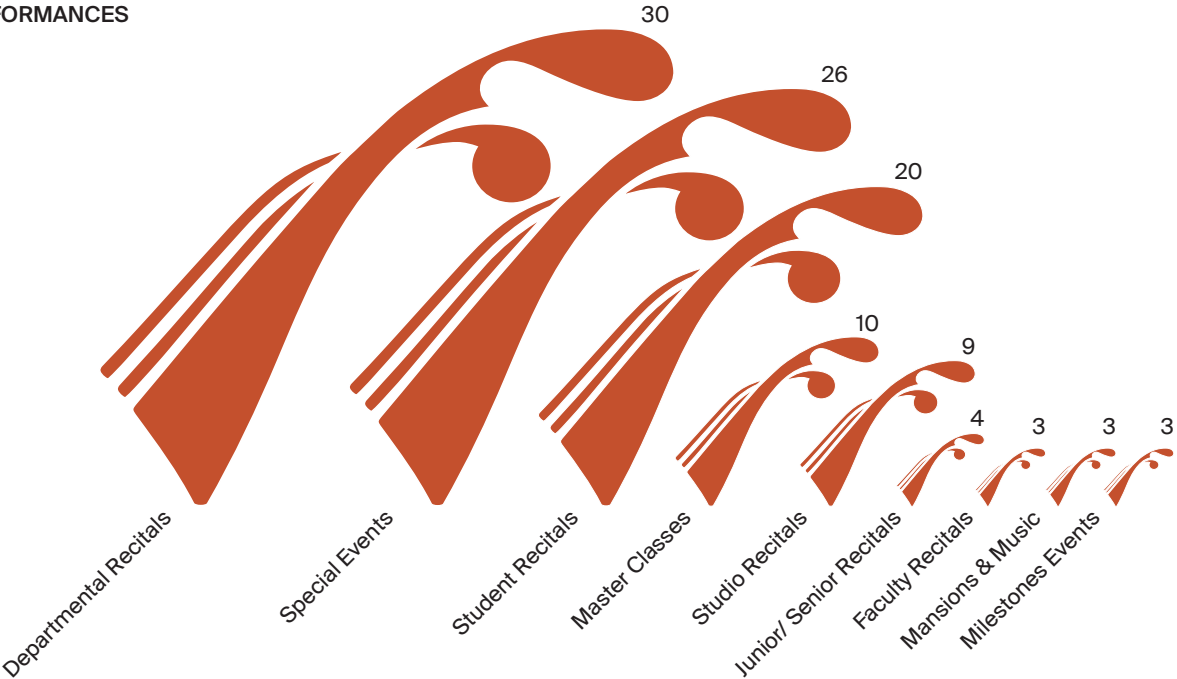
STUDENT PROFILE: RESIDENCE



STUDENT PROFILE: AGE



PERFORMANCES



ANNUAL OPERATING BUDGET







# Outreach

Through its three outreach programs, PCM strives to offer underserved youth in our community access to high-quality music education. Each year, these programs serve approximately 3,200 students, ages four through eighteen, throughout the greater San Gabriel Valley. They help meet an increasing need for access to arts education, as well as access to opportunities that will nurture each student's inherent musical aptitude.



# YOUNG MUSICIANS AT JEFFERSON ELEMENTARY

In 2002, PCM adapted and introduced its sequential and comprehensive Young Musicians (YM) program to its neighborhood school, Jefferson Elementary, a Title I (at-risk) school in the Pasadena Unified School District (PUSD). Each week for thirty-two weeks, three PCM instructors provide 35-minute music lessons to all prekindergarten through fifth grade students.



1,024 classes were provided to the 598 students at Jefferson Elementary School

Left: Students at Jefferson Elementary School and PCM teacher Erin Buschiazio, photos by Dario Griffin



# FINANCIAL AID/SCHOLARSHIP

PCM's financial aid/scholarship program provides and sustains financial assistance for students who demonstrate continued interest and commitment to music study. Tuition assistance supports their enrollment in a range of activities, including individual lessons and ensemble instruction.

68 students received onsite lessons through financial aid awards and scholarships

Left: Jazz Workshop student (top) and student at a Pasadena Showcase Music Mobile™ assembly



Right and below: Students at a Pasadena Showcase Music Mobile™ assembly

2,600 students participated in 82 assemblies provided by the Pasadena Showcase House Music Mobile™

# PASADENA SHOWCASE HOUSE MUSIC MOBILE™

Since 1999, Pasadena Showcase House Music Mobile™ has been presented in partnership with the Pasadena Showcase House for the Arts (PSHA). Music Mobile assemblies introduce third graders to the concepts of classical music and to the instruments of the orchestra through a hands-on experience with each instrument.





# Year in Review

This past year, the Conservatory presented student recitals, faculty concerts, master classes, guest artist performances, parent education panels, adult music history classes, donor events, **Mansions & Music**, **Guitar Nights**, and our newest series, **Songs About Place**. Thanks to all of the musicians, teachers, and audiences that make those performances possible. You are the faces of PCM!

1. Guitar Nights audience; 2. Mansions & Music performers Ming Tsu and Lorenz Gamma; 3. Andrew Cook, Shari Raynor, and Melanie Emelio perform at Mansions & Music; 4. Rick Mooney, Sara Koo, Jim Lee, and Kyle Champion with Mansions & Music hosts Michael Schneickert and Karen Otamura; 5. Vin Fiz Flyer performs for the first Songs About Place concert; 6. Jon Kleinhaus performs at Guitar Nights in

September; 7. PCM patrons James Ballinger and Annette Sneidermiller; 8. Student Katelyn Vahala; 9. Artist-Teacher Andrew Cook; 10. Artist-Teacher Scott Tennant performs with L.A. Guitar Quartet at Guitar Nights in May; 11. Master class with Wojciech Kocyan; 12. Incendio performs at Guitar Nights in September; 13. Student Rohan Prashant, teacher Jim Sullivan, and student Lawrence Wang; photos by Dario Griffin, Gary Leonard, and PCM







**Top row (L to R):** PCM friends and Bill and Brenda Galloway; Heather Haaga and Hope Tschopik Schneider; Dorinda Marticorena and Steve Slater  
**Second row:** Olin Barrett and Harry Eversole; John Baldeschwieler, Marlene Konnar, and Sid and Betsey Tyler; Patricia Ketchum and Danzey Treanor  
**Third row:** Nick and Amanda Stonnington and Stephen McCurry; Linda Dickason, Stuart Bowne, and George Abdo; Peggy Spear and Helen Hines  
**Bottom row:** The Guitarra del Sol planning committee with guest artist Marcin Dylla (center); Sara Lippincott and Adelaide Hixon

### LEGACY SOCIETY

PCM is grateful to have the ongoing and generous charitable support of many families, students, and community members; sustaining our high-quality music education programs both on and off campus. You can help ensure that future generations enjoy these programs by including PCM in your estate plan with a simple bequest, or even by naming PCM as the beneficiary of a life insurance policy. We encourage those who are considering making a planned gift to consult with a legal or financial advisor.

While cash contributions are always appreciated, a planned gift is another way to make a meaningful donation that substantially impacts our future. If you have named, or plan to name, PCM in your will or estate plan, please let us know. It is not necessary to share the details, but we would like to recognize your generosity today for your gift tomorrow. Organization's legal name: Pasadena Conservatory of Music Tax ID: 95-3900207

# Our Donors

## DONORS TO THE 2012-2013 ANNUAL FUND, PATRON DRIVE, AND OUTREACH PROGRAMS July 1, 2012-June 30, 2013

### \$25,000 AND ABOVE

Rich and Annette Atwood  
The Rose Hills Foundation

### \$10,000-\$24,999

James G. Boswell Foundation  
California Community Foundation  
Confidence Foundation  
Norma and Gary Cowles  
Los Angeles County Arts Commission  
Pasadena Showcase House for the Arts  
Ann Peppers Foundation  
Chieko Tada

### \$5,000-\$9,999

Ann and Olin Barrett  
Fred and Diane Blum  
Brian P. and Virginia N. Brooks  
California Arts Council  
City of Pasadena, Cultural Affairs Division  
Pamela and V. Shannon Clyne  
Colburn Foundation  
Charles and Henrietta J. Detoy Foundation  
Linda S. Dickason  
Stephen A. Kanter, M.D.  
Alison and Charles Liffand  
The Lluella Morey Murphey Foundation  
Roger and Gloria V. Mullendore  
Joan A. Payden  
The Julia Stearns Dockweiler Charitable Foundation

### \$1,000-\$4,999

Michael B. Abelson  
Priscilla and Robert Allen  
Linda J. Blinkenberg  
Stuart and Rebecca Bowne  
Carol Curtis Bramhall  
Anna Bresnahan  
Edmund A. and Marguerite L.A. Burke Foundation  
Sara Campbell and George Abdo  
The Ceva Family  
Susan and Stephen Chandler  
Richard E. Davis  
Henry and Mary Eversole  
Ms. Dorothy Falcinella  
Ira and Christine Felman  
Mr. and Mrs. C. Edward Foster  
Adelaide Hixon

Jefferson Elementary PTA  
Jane Kaczmarek  
Judith Kelly  
Rebecca and Peter Knell  
Marlene Konnar and John Baldeschwieler  
Dr. Lisa C. Krueger and Robert A. Wyman  
June and Simon Li  
Joanne and Ethan Lipsig  
Christine and Philip Lumb  
Thomas McHenry and Elena Phleger  
Metropolitan Associates  
Ralph F. Miles, Jr.  
Eudorah M. Moore  
Jane Moorman  
Gretl and Arnie Mulder  
Mullendore & Associates, Inc.  
Mary Lois Nevins  
Pasadena Arts League  
Pasadena Lodge No. 672  
Peggy Phelps  
Safety Consultant Services, Inc.  
Warren and Katharine Schlinger Foundation  
Hope Tschopik Schneider  
Dorothy McCay Scully  
Gloria and Edward Smith  
Laurie Sowd  
Karen and Jim Stracka  
Laura and Philip Strassle  
Ann and Steven Sunshine  
Philip V. Swan  
Target  
The Source at Beach, LLC

### \$500-\$999

Terry and Mary Andruess  
Chantal and Stephen Bennett  
Mr. and Mrs. Donald E. Bishop  
Mary Blodgett and Carlton Calvin  
Paul and Annie Brassard  
Marilyn and George Brumder  
Barbara and George Byrne  
Eric and Becky Chadwick  
Catherine "Tink" Cheney and Barry Jones  
Eric and Alice Clark Trust Fund  
Wendy Clough  
Marty and Bruce Coffey  
Don and Marilyn Conlan  
Alice and Joe Coulombe  
Ms. Jane S. Dietrich  
Georgianna and Paul Erskine  
Sandy Esserman and Stephen McCurry  
Fletcher Jones Foundation  
Mrs. Donald B. Freshwater

Thornton S. Glide, Jr. and Katrina D. Glide Foundation  
Paul and Margie Grossman  
Donald and Taylor Hall  
Kelsey Hall  
Sara Hauert  
Charlotte Hayden  
Donald Hoffman  
Jocce Hudson and Rook Campbell  
Virginia and Thomas Jones  
Patricia H. Ketchum  
Yonnie and Raymond Kim  
Joyce and Tom Leddy  
Gretchen and Graham Lewis  
Sara Lippincott  
Camille Lombardo and Ed Woodhull  
Penny and Jay Lusche  
G. Maletis and F. Schlueter  
Robert and Marguerite Marsh  
Delise and Tom Menik  
Harry Montgomery  
Mr. and Mrs. Phil Montoya  
Linda Gates Moore  
Janelle Hardin Morton  
Stephen and Anne Nowlin  
Joseph Nunez  
Cathy and David Partridge  
Gordon J. Pashgian  
Payden & Rygel  
Gloria and Donald Pitzer  
Jane M. Quinn  
RBC Foundation - USA  
Mr. and Mrs. Kenneth Riley  
Dr. John D. Roberts and Olive McCloskey  
Eugenie Schlueter and George Corey  
Julie and Robert Schlueter  
Philip E. Schlueter  
William E. Schlueter  
Michael Schneickert and Karen Otamura  
Annette Sneidermiller and Jim Ballinger  
Charles and Amy Stephens  
Martha Doerr Toppin  
Danzey Treanor  
Sid and Betsey Tyler  
Mary and Bill Urquhart  
Katheryn Venturilli  
Robert and Carolyn Volk  
Maria Low Way  
Ian and Barbara White-Thomson  
Bradley Whitford  
Judy and John Whiting

### \$250-\$499

Peggy Adams and Joel Edstrom  
Cynthia Bennett  
Carol Bierhorst

Marsha and Vernon Bohr  
MaryLou Boone  
Roman Andrew Borek  
Mrs. Barbara Campbell  
Mrs. Thomas K. Caughey  
Prashant Chandran and Sujata Iyer  
Mr. Michel Choban  
Marjore Chronister  
Anne Colin  
Mary Coquillard  
Ray Cortines  
Dr. and Mrs. David J. Dahl  
Joseph Davis and Stacey Wueste  
Wendy and Jeffrey Denham  
Virginia Detoy  
Timothy A. Dietrich  
Louise Dougherty  
Jakie and Ted Engs  
Ethel Farrand  
Louise Fox  
Marcia Good  
Susan and David Grether  
Ron Gustafson  
Susanne and Peter Hoffman-Kipp  
Roberta B. Huntley  
Marge and Robert Leighton  
Jennifer F. Lewis  
Hildegard Lindsey  
Claude and Frank Logan  
Barbara Martin  
Judy and Steve McDonald  
Diana Menkes  
Harold and Dorothy Meyerman  
Louisa Miller  
The Murray Family  
Jeffrey and Cynthia Nickell  
Jane Palmer  
Ms. Candice Pegram  
Maiya Penberthy  
Ralphs  
Margaret C. Richards  
Ernest Robles and Linda Curtis  
Michael and Amy Rodgers  
Ken and Maggie Sabbag  
David and Cheryl Scheidemantle  
Eileen and Fred Schoellkopf  
Rosemary Simmons  
Barbara Simpson  
Nancy and Douglas Smiley  
Anne Elizabeth and James Sobieski  
Phil Sotel  
Peggy C. Spear  
Mr. Robert Terjenian  
Brian P. Wernicke and Joann Stock  
Western Asset Management Company  
Peter and Romy Wyllie  
Sonja Yates and Randy Schenk



GIFTS IN MEMORIAM/  
HONOR

July 1, 2012–June 30, 2013

In memory of Estelle Schlueter

Terry and Mary Andrues  
Guilford and Gwendolyn Babcock  
Carol Curtis Bramhall  
Mary Jo Broussard Ford  
James and Joan Caillouette  
Joseph Davis and Stacey Wueste  
Louise Dougherty  
Sandy Esserman and Stephen McCurry  
Mrs. John Everett  
Henry and Mary Eversole  
Jackie and Don Feinstien  
Marianna and David Fisher  
Louise Fox  
Margaret R. and James M. Galbraith  
Paul and Margie Grossman  
Bitsy and Dick Hotaling  
Estelle and Kevin Huston  
Virginia and Thomas Jones  
Heinz-Josef Lenz and  
Maria Petrig-Lenz  
G. Maletis and F. Schlueter  
Grace Maletis  
Harold and Dorothy Meyerman  
Eudorah M. Moore  
Gordon J. Pashgian  
Janet J. Rose  
Robin Scanlan  
Eugenie Schlueter and George Corey  
Julie and Robert Schlueter  
Philip E. Schlueter  
William E. Schlueter  
Dennis Slattery  
Regina Winegar  
In memory of Alexandra Eversole  
Michael Lloyd and Linda Bell  
Gordon J. Pashgian  
Robert Terjenian  
In memory of Bernice and  
David Lifton  
Elizabeth Hincks  
In memory of Charles Lewis  
Ken Carmichael  
In honor of Olin Barrett  
Paul and Margie Grossman  
In honor of Gretl and Arnie Mulder  
Martha Cooley  
Debby and Martin Weiss  
In honor of Stuart and Rebecca Bowne  
Catherine “Tink” Cheney and  
Barry Jones  
In honor of Cameron Stone  
Jocee Hudson and Rook Campbell  
In honor of Harry Eversole

Gordon J. Pashgian

MILESTONES CAMPAIGN  
DONORS

Up to October 2013

GIFTS OF \$500,000 AND ABOVE

Ahmanson Foundation  
Rich and Annette Atwood  
Norma and Gary Cowles  
Ed and Connie Foster  
Judith G. Kelly  
Ralph M. Parsons Foundation

GIFTS OF \$250,000–\$499,999

Olin and Ann Barrett  
Linda S. Dickason  
Paul and Heather Haaga  
Wendy Munger and Leonard Gumport

GIFTS OF \$100,000–\$249,999

Ayrshire Foundation  
Confidence Foundation  
Adelaide Hixon  
Jane Kaczmarek  
Ellen and Harvey Knell  
Penny and Jay Lusche  
Dorothy McCay Scully  
Peggy Phelps  
Hope Tschopik Schneider  
United Plankton Charitable Trust

GIFTS OF \$50,000–\$99,999

George Byrne and Barbara  
Barrett-Byrne  
Mary Crotty O'Reilly  
Desert Community Foundation  
Henry and Mary Eversole  
Stephen A. Kanter, M.D.  
Patricia H. Ketchum  
Terri and Jerri Kohl  
Mericos Foundation  
Roger and Gloria V. Mullendore  
Mrs. Richard Nevins  
Pasadena Community Foundation  
Sid and Betsey Tyler

GIFTS OF \$25,000–\$49,999

Anonymous  
Linda J. Blinkenberg  
Stuart and Rebecca Bowne  
Pamela and V. Shannon Clyne  
Good Family Foundation  
Jon and Edna Hartmann  
Gregory D. and Jennifer W. Johnson  
Alison and Charles Lifland  
Ralph F. Miles, Jr.  
Priscilla Moorman  
Mountain View Fund  
Betty Sandford

Tom and Laney Techentin

GIFTS OF \$10,000–\$24,999

George and Sara Abdo  
Avery Dennison Corporation  
Virginia N. and Brian P. Brooks  
Fred and Fritzle Culick  
Virginia Y. Detoy  
Mr. and Mrs. Henry Eversole Jr.,  
in memoriam  
William H. Hurt Foundation  
Fletcher Jones Foundation  
Julienne  
Rebecca and Peter Knell  
Joyce and Tom Leddy  
Sara Lippincott  
Janelle Morton  
Gretl and Arnold Mulder  
Elena Phleger and Thomas McHenry  
Terrence and Rita Roberts  
Julia Stewart and Tim Ortman  
Karen and Jim Stracka  
Ian and Barbara White-Thomson

GIFTS OF \$5,000–\$9,999

Anonymous (2)  
Peggy Adams and Joel Edstrom  
Carol Bramhall  
Marilyn and George Brumder  
Elisa and Eric Callow, in honor  
of Beverly Lafontaine  
The Ceva Family  
Catherine “Tink” Cheney and  
Barry Jones  
Barbara Dahn  
Sandra Esserman and Stephen McCurry  
Mr. and Mrs. Mark Fabulich  
Rosemary Lonergan  
Adele Lun  
Mary Jo and Don McCurry  
Cynthia J. Nunes and Barbara E. Nye,  
in honor of Jo L. Robinson  
Ann and Steven Sunshine  
Suzanne and Jon Torgeson  
Carolyn and Robert Volk

GIFTS OF \$1,000–\$4,999

Priscilla and Robert Allen  
William J. and Claire W. Bogaard  
Charitable Trust  
Ginny and John Cushman  
Jane Dietrich  
Robert and Jane Ettinger  
Amelia H. Firnstahl  
James and Harriett Fullerton  
Kelsey Hall  
The Tsutayo Ichioka and Satsuki  
Nakao Charitable Foundation  
Jim and Jean Keatley  
Frances R. Kimbrough

Charlene and Jack Liebau  
Camille Lombardo  
Dorinda Marticorena and  
Steve Slater

Barbara Martin  
Dorothy & John Matthiessen  
Cynthia and Jeff Nickell  
Paul and Elizabeth Pattengale  
Kathleen and Charles Peck  
Rincon Foundation  
Ernest Robles and Linda Curtis  
Gloria and Edward Smith  
Laurie Sowd  
Linda Davis Taylor

GIFTS OF \$500–\$999

Jonathan and Kimberly Berry  
Roman Andrew Borek  
Eric and Alice Clark Trust Fund  
DJP Fund of the Jewish  
Community Foundation  
Cecilia Gutierrez  
Sharon L. Harman, in honor of  
Ward and May Harman  
Stephen and Anne Nowlin  
Peggy C. Spear  
Janet Sporleder  
Timothy B. Still  
Brian Wernicke and Joann Stock

GIFTS OF \$250–\$499

Anonymous, in memory of  
Charlotte Zelka and  
Christine Glazier  
Michele and Bret Hardy  
Beverly Lafontaine

PCM's outreach programs  
were made possible thanks to  
the support of the following  
foundations and agencies:  
California Community Foundation,  
Confidence Foundation, Julia Stearns  
Dockweiler Foundation, The Green  
Foundation, Jefferson Elementary  
PTA, Luella Morey Murphey  
Foundation, Pasadena Arts League,  
Pasadena Showcase House for the  
Arts, Ann Peppers Foundation, Rose  
Hills Foundation



Enriching Lives

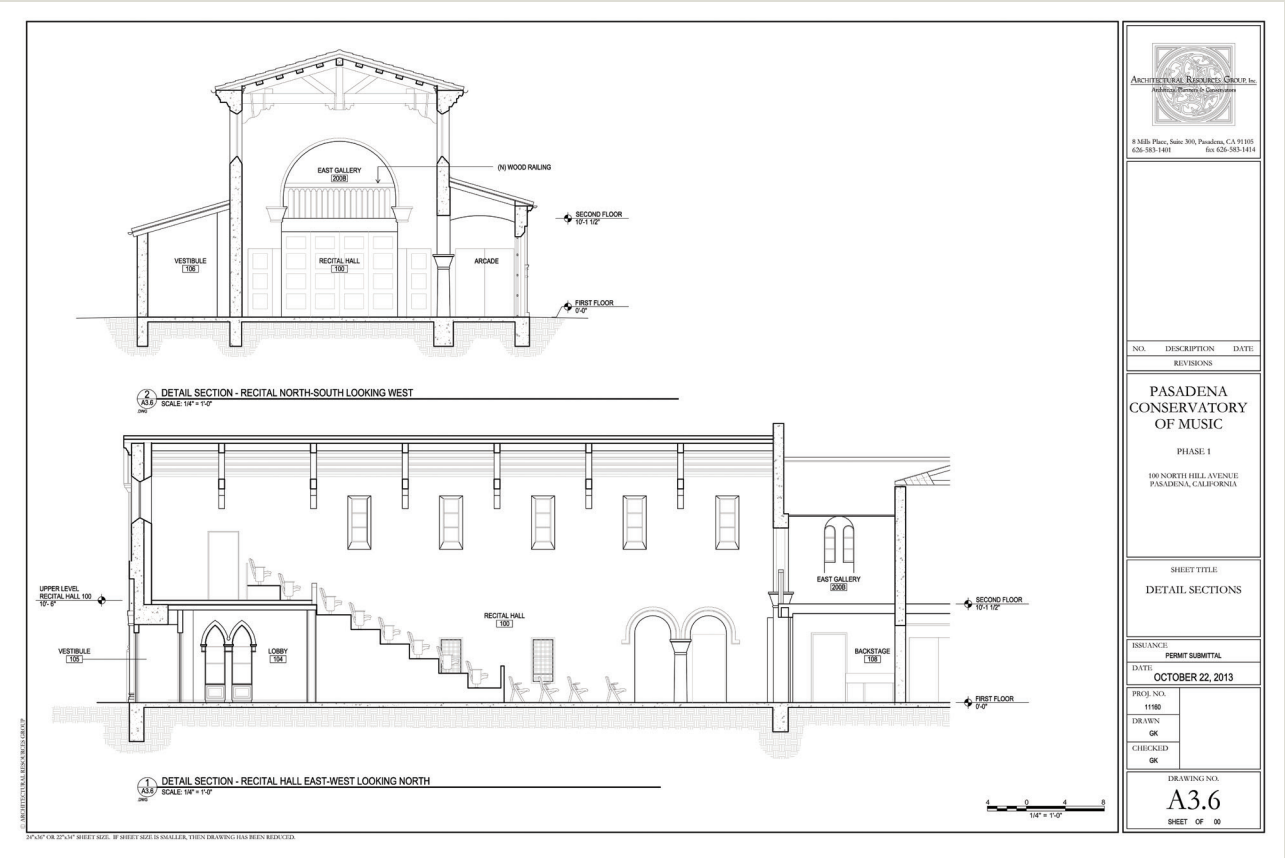


# PCM for the Future

In January 2011, PCM launched a capital campaign to raise the funds needed to improve and expand the campus. To date, we have raised just over \$7,000,000 towards our \$7,500,000 goal. Two important milestones have been accomplished. We anticipate the completion of the third milestone this year.

- Architectural Resources Group has prepared a campus development plan that provides guidance for the long-term.
- PCM acquired and improved the adjacent property which added studios, classrooms, offices, and a second performing venue to our campus. This enabled the introduction of a jazz studies department and a twelve percent growth in enrollment over the past year.
- This year, we will complete the Milestones Campaign, which will allow us to begin development of an exquisite and intimate performance hall, a music library, significant improvements to infrastructure, and site work that integrates our two properties while improving safety, security, and accessibility.

The generosity across the spectrum of our constituencies is extraordinary. We are deeply grateful for this support that is so critical to our success.







**Top row (L to R):** Teacher Elizabeth Babor with student Ralph Miles, summer jazz workshop students. **Second row:** Student Brian Espinoza; teacher Dorothy Kwon with student Nathalia Caramaschi; student Ian Camner. **Third row:** Student Anya Kwan, teacher Stephen Cook, and student Chelsea Lim; YM teacher Sharon Weed with parents and students; teacher Felix Bullock

with student Djembe Aschmann. **Bottom row:** Teacher Nic Gerpe with student Patrick Babajanian; student Grayson Gooden, photos by Gary Leonard

Faculty & Staff

FACULTY

**CHAMBER MUSIC**  
Andrew Cook, department chair,  
Artist-Teacher, cello  
Cynthia Fogg, viola and violin  
Sharon Harman, viola and violin  
Mary Kelly, viola and violin  
Rebecca Merblum, cello  
Elizabeth Pattengale, cello  
Patrick Rosalez, violin  
Jim Sullivan, clarinet  
Susan Svrček, piano  
Erika Walczak, violin

**GUITAR**  
Felix Bullock, department chair  
Brian Barany  
Adam Pettit  
Michael Sawitzke  
Connie Sheu  
Scott Tennant, Artist-Teacher

**JAZZ**  
Ray Briggs, department chair  
Michael Birnbryer, saxophone  
Steve Cotter, guitar  
Gary Fukushima, piano  
Toby Holmes, low brass  
Sherry Luchette, bass  
Roy McCurdy, Artist-Teacher,  
percussion  
Damon Zick, saxophone

**PIANO**  
Susan Svrček, department chair,  
Artist-Teacher  
Elizabeth Babor  
Annie Chen  
Wendy Chen  
Stephen Cook  
Nicolas Gerpe  
Renee Gilormini  
Enrique Gonzalez-Medina  
Hsin-Tai Liu  
Vatché Mankerian  
Bobbie Ann Meech  
Kay Min  
Elizabeth Sawitzke  
Mariné Ter-Kazaryan

**STRINGS**  
Mary Kelly, department chair,  
viola and violin  
Rick Mooney, artistic director,  
Artist-Teacher, cello  
Niklas Bertani, cello  
Andrew Cook, Artist-Teacher, cello  
Madeleine Eaton, violin  
Tim Eckert, bass  
Rachel Fabulich, viola and violin  
Cynthia Fogg, viola and violin  
Sharon Harman, violin  
Tami Iskendarian, violin  
Dorothy Kwon, viola and violin  
Jim Lee, cello  
Varty Manouelian, Artist-Teacher,  
violin  
Rebecca Merblum, cello  
Elizabeth Pattengale, cello  
Patrick Rosalez, violin  
Erika Walczak, violin

**THEORY, HISTORY, & COMPOSITION**  
Priscilla Pawlicki, deparment chair,  
theory and history  
Ray Briggs, history  
Matthew Brown, theory and  
composition  
Stephen Cook, history  
Kimberlea Daggy, history  
Enrique Gonzalez-Medina, composition

**VOCAL ARTS**  
Tamara Bevard  
Michele Hemmings  
Mariné Ter-Kazaryan

**WOODWINDS, BRASS, & PERCUSSION**  
Heather Millette, department chair,  
clarinet  
Michael Birnbryer, saxophone  
Melissa Frey, bassoon  
Melanie Hoffman, trumpet  
Toby Holmes, low brass  
Kimberly Lamb, oboe  
Barbara Mullens-Geier, flute  
Danielle Ondarza, horn  
Jim Sullivan, clarinet  
T.J. Troy, percussion  
Damon Zick, saxophone

**YOUNG MUSICIANS**  
Rachael Doudrick, department chair  
Kimberly Berry  
Erin Buschiazzo  
Elizabeth Sawitzke  
Sharon Leung Weed

STAFF

Stephen McCurry  
Executive Director

Courtney Davis  
Accounting Assistant

Amelia Firnstahl  
Director of Operations

Melissa Froehlich  
Director of Development

Keani Kahuhu  
Administrative Assistant

Jeannie Robbins  
Program and Facilities Manager

Wendy Vazquez  
Development and Marketing Coordinator

Erica Wrightson  
Director of Marketing and  
Communications





**Above (clockwise):** Students Chez Epps, Julia Langer, Thelonious Cundieff, and Uriel Lopez, photos by Gary Leonard and Dario Griffin

**Inside cover:** Students and faculty from PCM's summer Jazz Workshop, photo by Gary Leonard

**Front cover:** Students Justin Berger-Davis and Ethan Lainez, and teacher Mary Kelly, photos by Gary Leonard

**Back cover:** Students Ruben Rodriguez and Eric Chadwick, photos by Dario Griffin





100 NORTH HILL AVENUE, PASADENA, CA 91106

NON-PROFIT  
ORGANIZATION  
U.S. POSTAGE  
PAID  
PASADENA, CA  
PERMIT #699

